



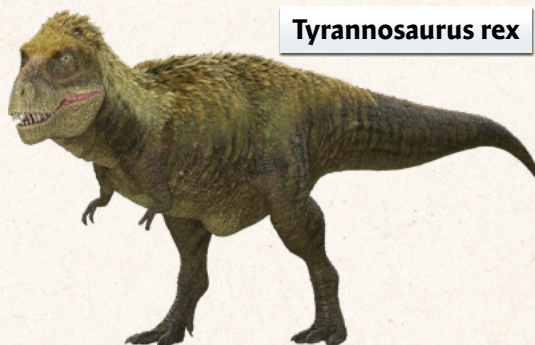
This project has been made possible in
part by the Government of Canada

MATCHING

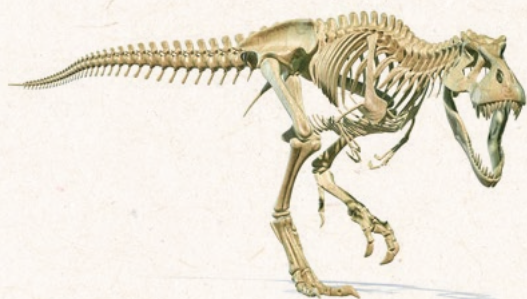
When you go to some museums you can see dinosaur skeletons that paleontologists have dug up!
Draw lines to match each skeleton to the right dinosaur.



Euoplocephalus



Tyrannosaurus rex



Pachycephalosaurus

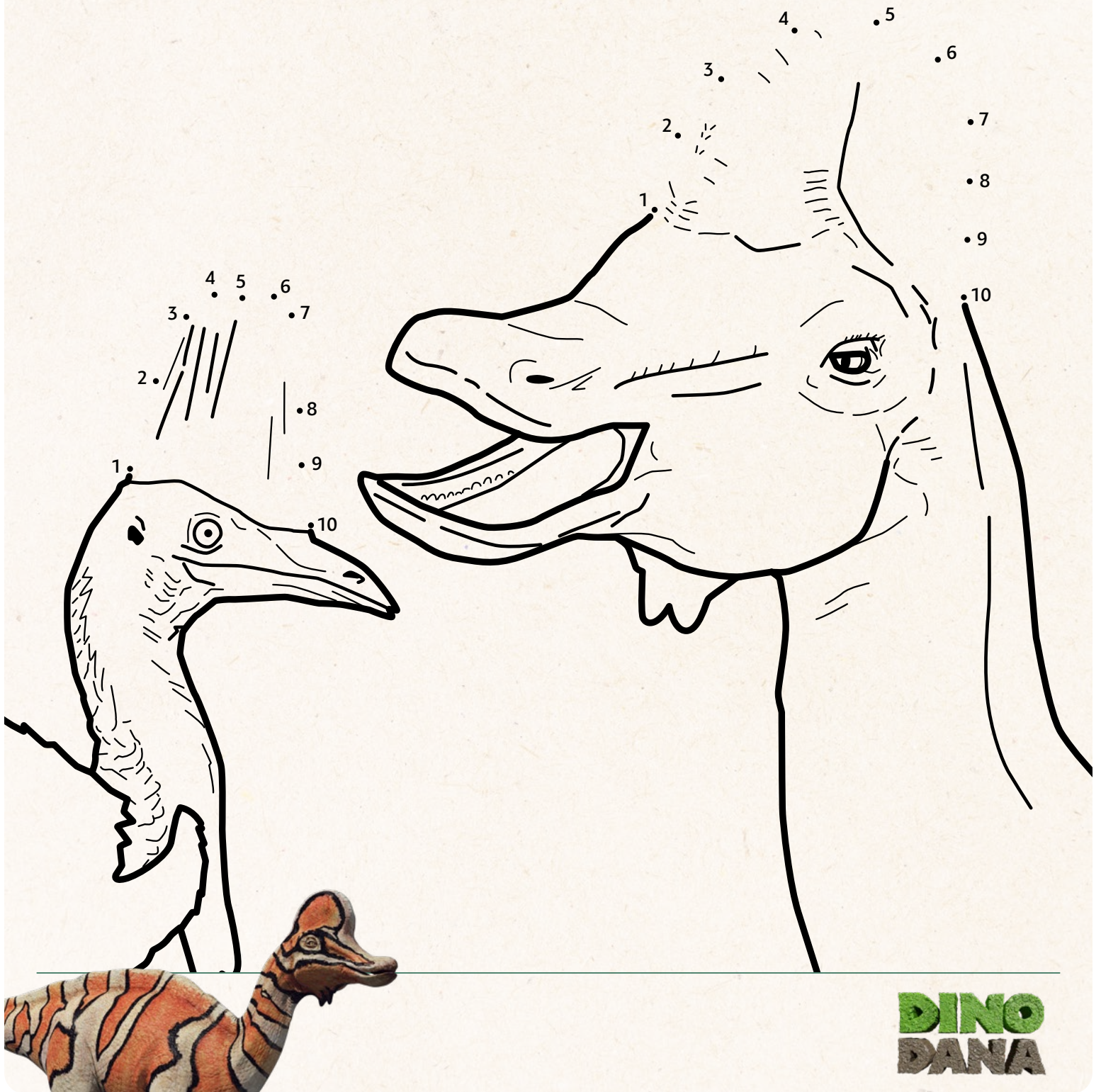


Stegosaurus



CONNECT THE DOTS

Paleontologists now think that birds came from dinosaurs. That means we can learn about dinosaurs from studying birds! Connect the dots to see how the Cassowary bird is similar to the Corythosaurus!



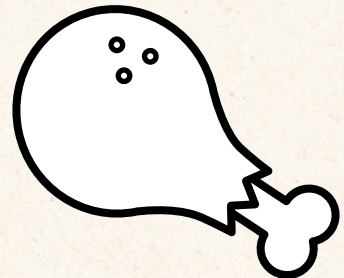
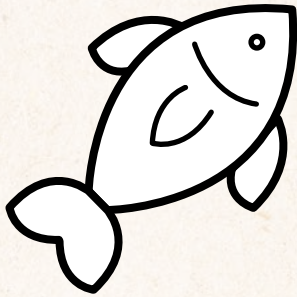
FAMILY PORTRAIT

Some paleontologists think that the Stygimoloch and Dracorex were actually just kid and teenage versions of the Pachycephalosaurus! That means they were all in the same family. All families look different, and that's what makes them special. Draw a picture of your family.



CATEGORY SELECTION

The Brachiosaurus was a herbivore, which means it ate plants, not meat. You can think of it like a vegetarian! Circle and color the food that a herbivore would eat.



**FUN
FACT**

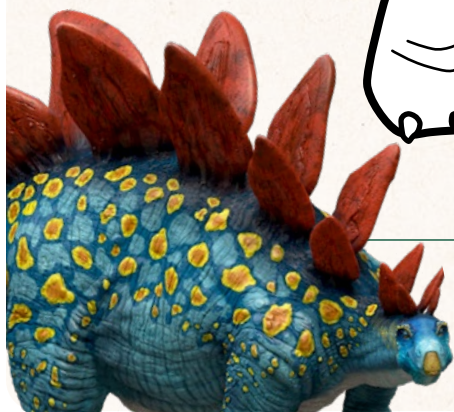
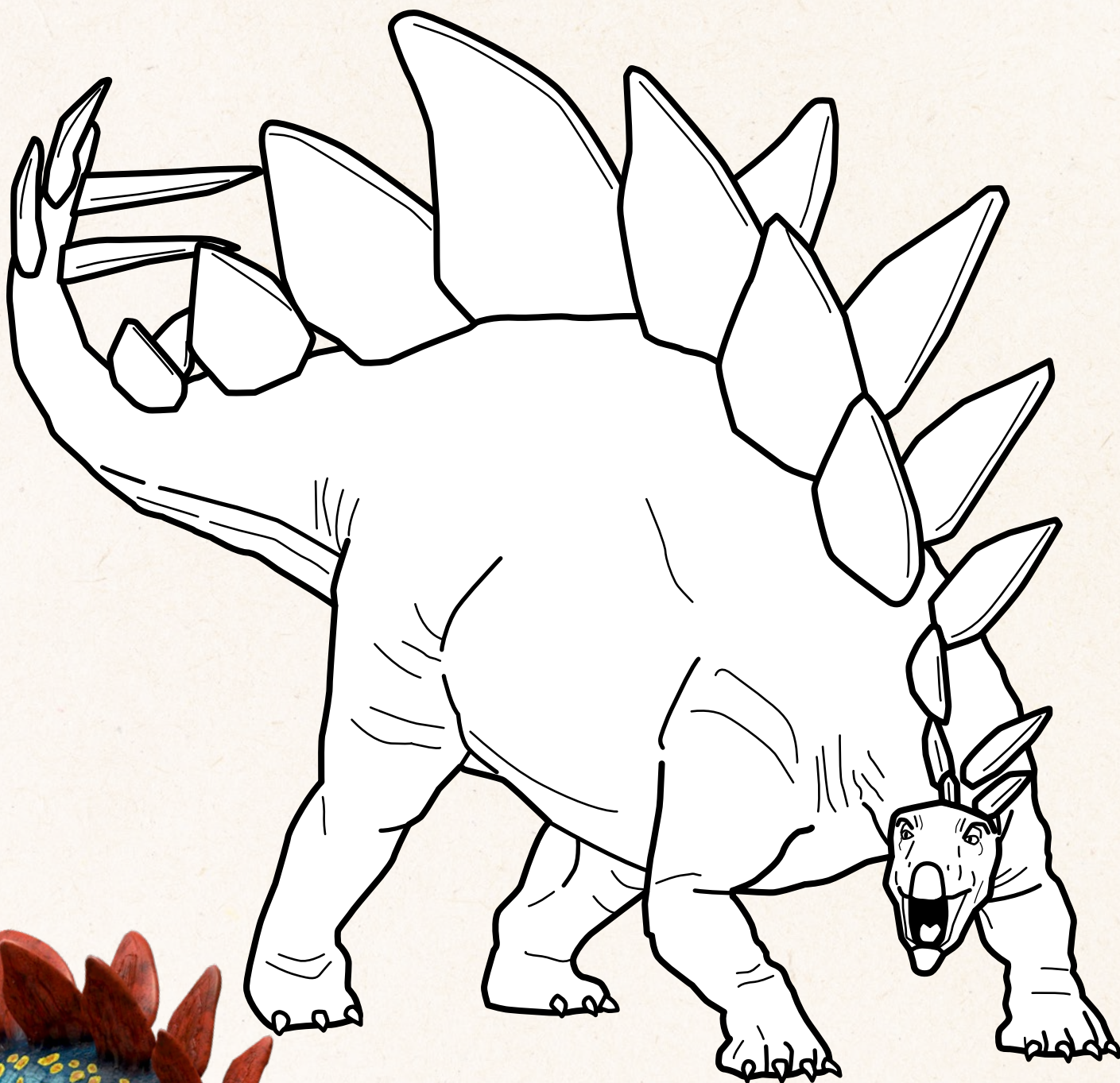
The Brachiosaurus
ate the tops of 18
trees each day!



**DINO
DANA**

COLORING

Some paleontologists think the plates on the Stegosaurus could change color! Color the Stegosaurus and be sure to give it colorful plates!



COLORING

Look at the Brachiosaurus eating from a tree top!

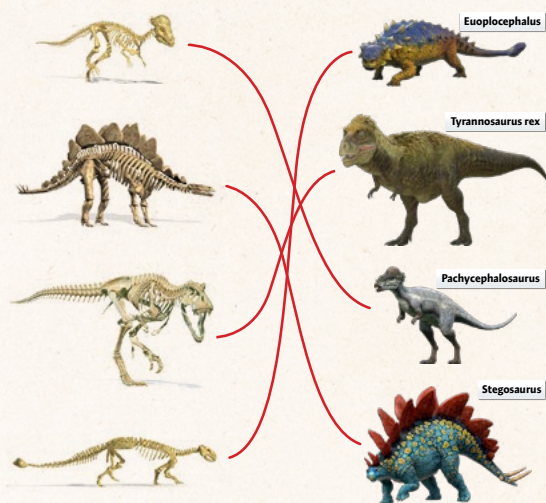


DINO
DANA

ANSWERS

MATCHING

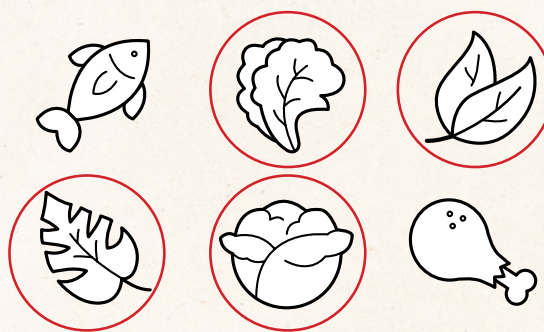
When you go to some museums you can see dinosaur skeletons that paleontologists have dug up! Draw lines to match each skeleton to the right dinosaur.



DINO
DANA

CATEGORY SELECTION

The Brachiosaurus was a herbivore, which means it ate plants, not meat. You can think of it like a vegetarian! Circle and color the food that a herbivore would eat.



FUN
FACT

The Brachiosaurus
ate the tops of 18
trees each day!



DINO
DANA

HOW TO PRONOUNCE...

Brachiosaurus: Brack-ee-oh-sore-us

Corythosaurus: Kor-ith-oh-sore-us

Dracorex: Dray-co-rex

Euoplocephalus: Yoo-op-lo-sef-al-us

Pachycephalosaurus: Pah-key-sef-ah-lo-sore-us

Stegosaurus: Steg-uh-sore-us

Stygimoloch: Stij-eh-moll-uk

Tyrannosaurus rex: Tie-ran-oh-sore-us rex